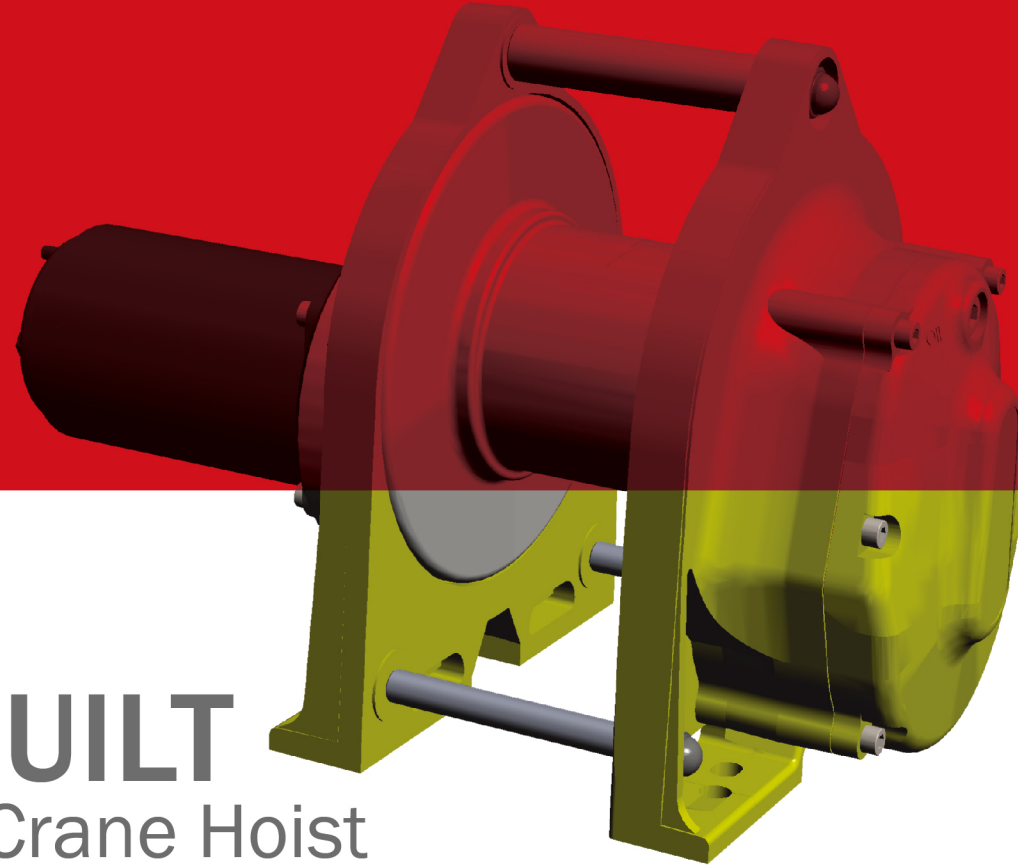


COMEUP

PULL. LIFT. POWER



DH-Series Hoist **PURPOSE BUILT** For Mobile Vehicle Crane Hoist

The COMEUP DH-series hoist offers a fresh perspective for mobile vehicle crane hoist – hoists rigorously design for mobile crane operators. The drum and cable system delivers maximum speed from the very top layer. DH-series hoist is rated at their top layer of wire rope on the drum, 25% ED duty cycle and maximum starting frequency of 150 times/h at 63% load. In addition, DH-series hoist passed 100% load 200hrs life test.

DH-series delivers smooth running over heavy-duty the speed range, low amp. draw and low sound level plus the lightweight and compact design for easy installation. This product lineup is designed specifically for light to heavy duty mobile vehicle crane. It's also suitable for wide range of strict lifting applications.

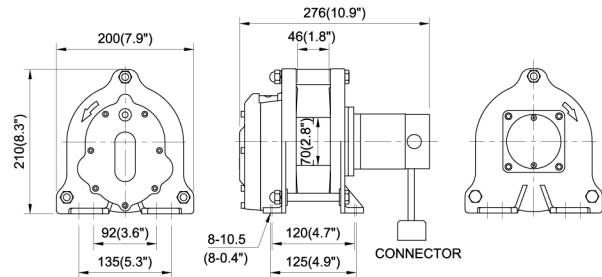
The COMEUP DH-Series reflects our commitment to help our customers gain more sales with quality, design, innovation and service that benefit their customers.

DH-120 / DH-120A HOIST
PN: 751950 / PN: 751980



Rated Line Lift: 120 kg (265 lb)
Speed: 5 mpm / 16.4 fpm
Motor: 100 w / 0.14 hp reversible permanent magnet motor
Power Supply: DC 12V (DH-120) / DC 24V (DH-120A)
Circuit Breaker: 20A (DH-120) / 10A (DH-120A)
Gear Ratio: 56:1
Drum Size: 70 mm x 46 mm (2.8" x 1.8")
Wire Rope: 4 mm x 5 m (5/32" x 16') , Galvanized aircraft 6 x 19
Hook: Safety hook
Controls :
 - Type: Direct
 - Power cord: 5.5 mm² x 2c x 4.2 m
 - Switch cord: 5.5 mm² x 2c x 2.9
 - Pendant switch: CPB-271
 - Control box: No
Hoist Weight: 17 kg / 37.4 lb
Gross Weight: 19 kg / 41.9 lb
Box Dimension: 356 x 230 x 210 mm (14.0" x 9.1" x 8.3")

Dimension

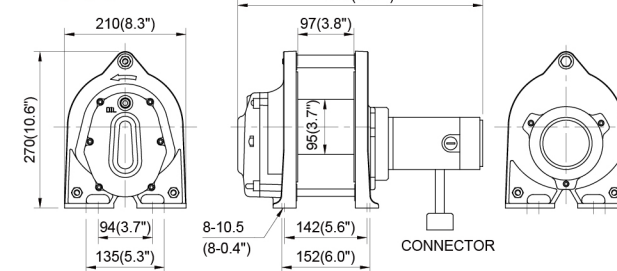


DH-300 / DH-300A HOIST
PN: 752589 / PN: 752155



Rated Line Lift: 300 kg (661 lb)
Speed: 5 mpm / 16.4 fpm
Motor: 300 w / 0.41 hp reversible permanent magnet motor
Power Supply: DC 12V (DH-300) / DC 24V (DH-300A)
Circuit Breaker: 30A (DH-300) / 15A (DH-300A)
Gear Ratio: 240:1
Drum Size: 95 mm x 97 mm (3.7" x 3.8")
Wire Rope: 4.8 mm x 12 m (3/16" x 39') , Galvanized aircraft A7 x 19
Hook: Safety hook
Controls :
 - Type: Indirect (DH-300) / Direct (DH-300A)
 - Power cord: 5.5 mm² x 2c x 3.9 m (DH-300)
 5.5 mm² x 2c x 4.2 m (DH-300A)
 - Switch cord: 0.75 mm² x 3c x 4.4 m (DH-300)
 5.5 mm² x 2c x 2.9 (DH-300A)
 - Pendant switch: CPB-161 (DH-300) / CPB-271 (DH-300A)
 - Control box: Yes (DH-300) / No (DH-300A)
Hoist Weight: 27 kg / 59.5 lb
Gross Weight: 34 kg / 75.0 lb
Box Dimension: 580 x 250 x 290 mm (22.8" x 9.8" x 11.4")

Dimension

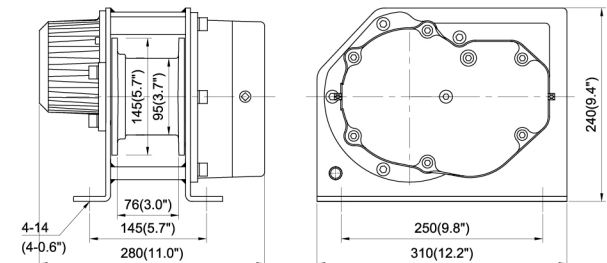


DH-500 / DH-500A HOIST
PN: 752805 / PN: 752939



Rated Line Lift: 500 kg (1,102 lb)
Speed: 3 mpm / 9.8 fpm (DH-500)
 4 mpm / 13 fpm (DH-500A)
Motor: 300 w / 0.41 hp reversible permanent magnet motor
Power Supply: DC 12V (DH-500) / DC 24V (DH-500A)
Circuit Breaker: 50A (DH-500) / 30A (DH-500A)
Gear Ratio: 276:1
Drum Size: 95 mm x 76 mm (3.7" x 3.0")
Wire Rope: 6.2 mm x 12 m (1/4" x 39') , Galvanized aircraft A7 x 19
Hook: Weight hook
Controls :
 - Type: Indirect
 - Power cord: 5.5 mm² x 2c x 2.9 m
 - Switch cord: 0.75 mm² x 3c x 4.4 m
 - Pendant switch: CPB-161
 - Control box: Yes
Hoist Weight: 27 kg / 59.5 lb
Gross Weight: 33 kg / 72.8 lb
Box Dimension: 330 x 330 x 275 mm (13.0" x 13.0" x 10.8")

Dimension



Remarks: Indirect control and pendant switch with emergency stop are available upon request.